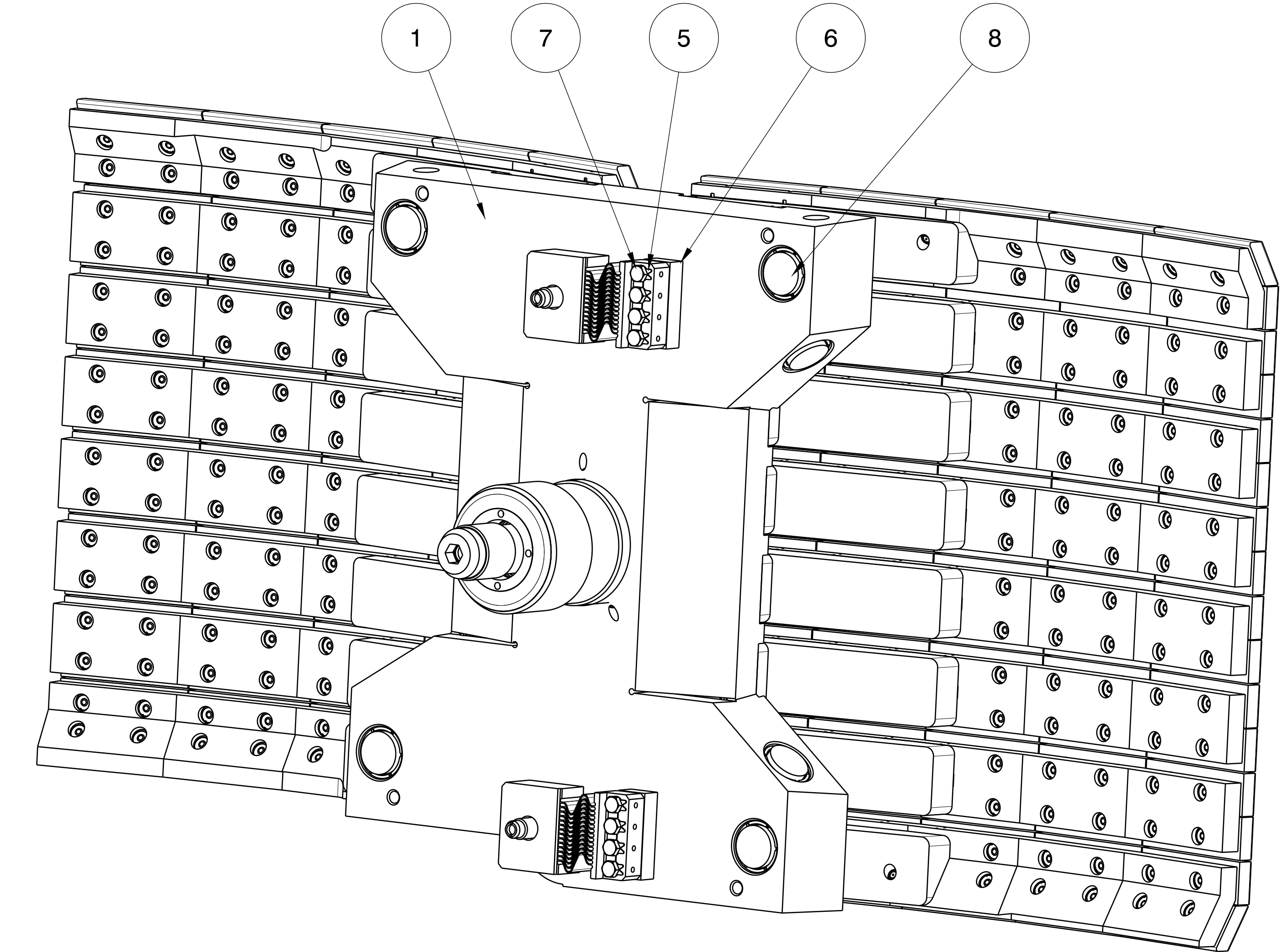
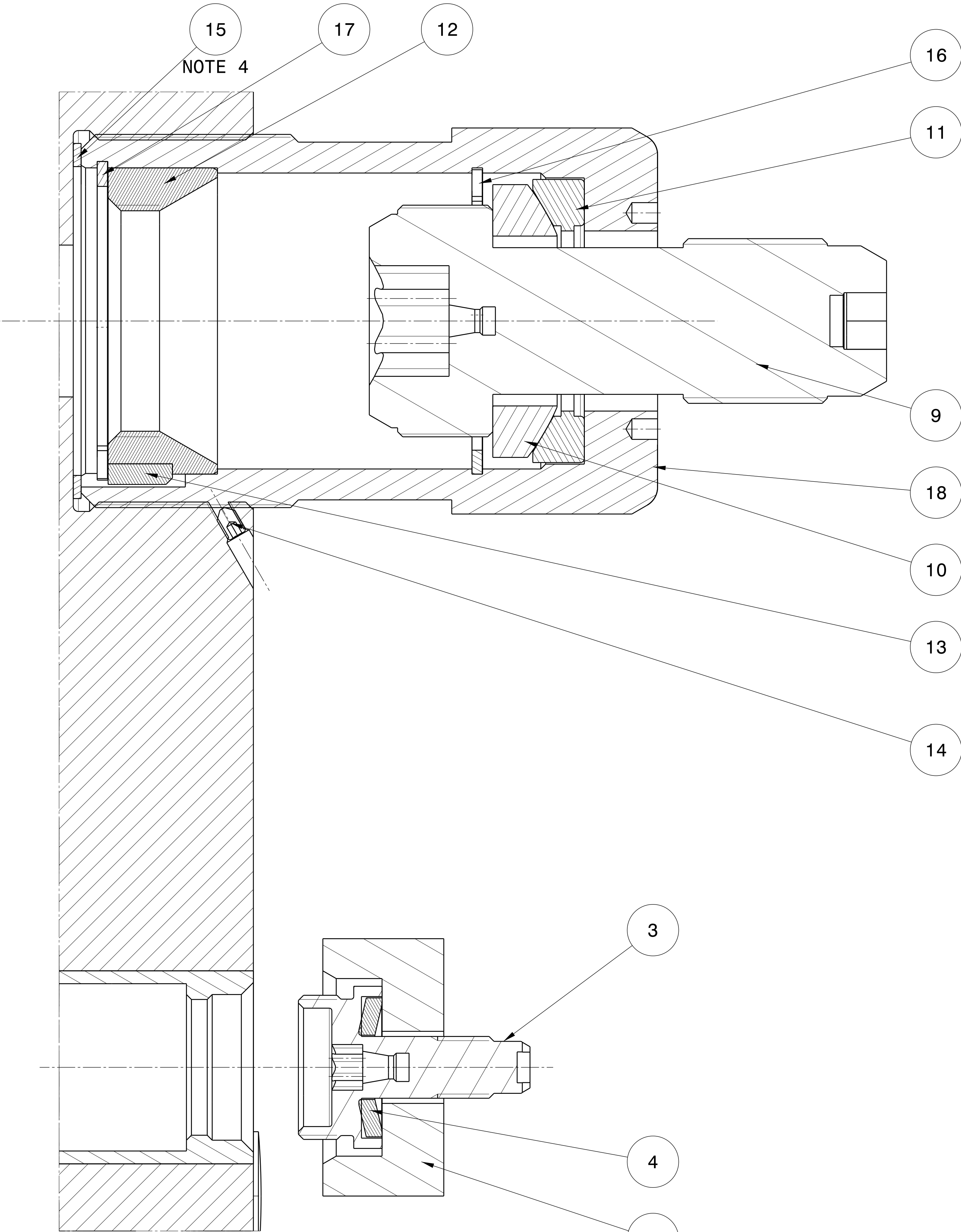


FRONT VIEW

SECTION VIEW A-A



ISOMETRIC VIEW



DETAIL C
Scale: 1:1

Item Number	Description	ENOVIA ID	Material	Qty	Weight (kg)	Linked Drawing	Comments
1	BKT_TFW_09	C6XPXD	Ref. Drawing	1	1106.133kg	073940	
2	BLKT_ES_14L_FW	RNJ89Y	CuCrZr-IG (ITER_D_SYL2N7)	2	4.82kg	055879	Note 3
3	BLKT_ES_BOLT_M24_6S_SPEC_HEAD	FDNS3Z	Steel 660 (EN1.4980)	2	0.535kg	055880	Note 3
4	SPRING_WASHER_22_53_4	4AZXNF	Alloy 718	2	0.097kg	055882	Note 3
5	BLKT_ES_PLATE_14L	4AZXSM	Steel 316L (EN1.4404)	2	0.009kg	055881	Note 3
6	BKT_TFW_Cu_PEDESTAL_ES_14L	G38QZ5	Cu	2	0.72kg	081145	
7	HEXAGON_HEAD_BOLT_BS_4190_M12X78	G4ZWNX	Steel 660 (EN 1.4980)	8	0.086kg	081147	
8	BKT_STD_FW_PADS	V32T96	Ref. Drawing	8	0.608kg	044163	Note 3
9	BLKT_FW_CENTRAL_BOLT	T4FZH2	Steel 660 (EN 1.4980)	1	5.29kg	055948	Note 3
10	BLKT_FW_SPHERICAL_WASHER	T4G4RH	Alloy 718	1	0.864kg	055959	Note 3
11	BLKT_FW_CONICAL_WASHER_CENTRAL_BOLT	T4G53E	Alloy 718	1	0.75kg	055960	Note 3
12	BLKT_FW_CB_PARKING_FEATURE	T4G9P9	Steel 304L (EN 1.4307)	1	1.442kg	055958	Note 3
13	BLKT_FW_BARREL_SHEAR_KEY	SJ522P	Steel 316L (EN 1.4404)	1	0.014kg	055961	Note 3
14	HEXAGON_SOCKET_SET_SCREW_ISO_4027_M8X12	SJCLMX	Steel 9.8	2	0.003kg	N/A	Note 3
15	BLKT_FW_BARREL_SHIM	4AZ5B8	Steel 316L (EN1.4404)	1	0.089kg	081148	Note 4
16	RETAINING_RING_DIN_472-1_115X4	4JYK3B	Steel 316L (EN1.4404)	1	0.079kg	N/A	Note 3
17	RETAINING_RING_DIN_472-1_120X4	4JYN9M	Steel 316L (EN1.4404)	1	0.086kg	N/A	Note 3
18	BLKT_TFW_09_THREADED_BARREL	FV0ZGX	Al bronze (C63200)	1	11.464kg	Covered by 080862	
Total Weight: 1142.168Kg							

- NOTES:
1: ALL DIMENSIONS COULD BE FOUND IN 3D CAD MODEL AS REFERENCED IN TITLE BLOCK
2: COMPONENT TO BE COMPLIANT WITH TECHNICAL SPECIFICATION REQUIREMENTS (ITER_D_EASURR)
3. FREE ISSUED ITEMS
4. COMPONENT TO BE CUSTOMIZED FOLLOWING INPUT FROM IO.

ENOVIA ID: FRB2AA	APPROVED BY: HUNTR	TECHNICAL SPECIFICATION: INTERNAL USE	LEGAL OWNER: ITER
LINKED BY: FUB2CR	TECHNICAL REF: CHENL2	Who received pursuant to a contract or agreement, the confidentiality clause shall be applicable.	
LINKED TO: FUB2D9	CHENL2	Who received during tender phase, the confidentiality clause shall be applicable.	
Blanket System	Blanket System	Blanket System	
Temporary First Wall Pan	Temporary First Wall Pan	Temporary First Wall Pan	
30 Apr 26	FD	NSR	
IN STATUS: A	SCALE: 1:1	QUALITY CLASS: QC-1	DOCUMENT TYPE: Assembly Drawing
THIRD ANGLE PROJECTION	FRONT: A016 TW 09	PAGE NUMBER: 080410	REVISION: 02